

# LBS HARDWOOD

## ROUND HEAD SCREW FOR PLATES ON HARDWOODS

### HARDWOOD CERTIFICATION

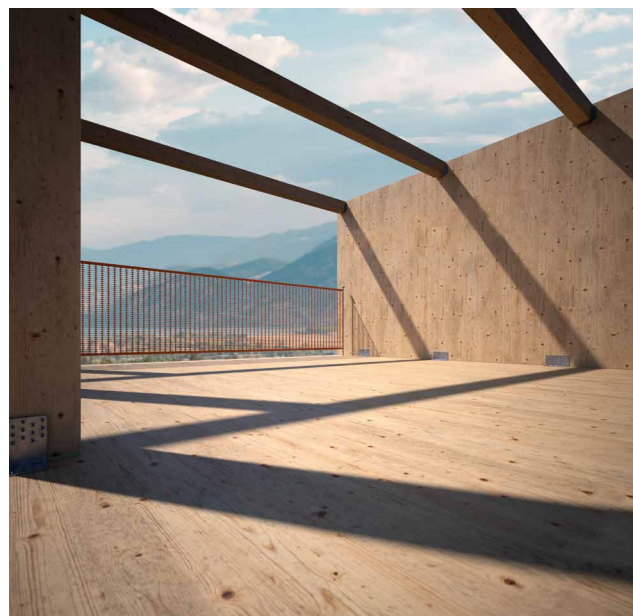
Special tip with embossed slit elements. ETA-11/0030 certification allows for use with high density timber without any pre-drill. Approved for structural applications subject to stresses in any direction vs the grain.

### LARGER DIAMETER

Root diameter increased compared to the LBS version to ensure tightening in the highest density woods. In steel-timber connections, an increase in strength of more than 15% can be achieved.

### SCREW FOR PERFORATED PLATES

Cylindrical shoulder designed for fastening metal elements. Achieves an interlocking effect with the hole in the plate, thus guaranteeing excellent static performance.



#### DIAMETER [in]

0.14  0.20  0.48

#### LENGTH [in]

1  1 9/16  2 3/4  8

#### EXPOSURE CONDITION



#### ATMOSPHERIC CORROSIVITY



#### WOOD CORROSIVITY



#### MATERIAL



electrogalvanized carbon steel



## FIELDS OF USE

- timber based panels
- solid timber and glulam
- CLT and LVL
- high density woods
- beech, oak, cypress, ash, eucalyptus, bamboo

## CODES AND DIMENSIONS

d <sub>1</sub> [mm] [in]	CODE	L		b		pcs
		[mm]	[in]	[mm]	[in]	
5 0.20 #11 TX 20	LBSH540	40	1 9/16	36	1 7/16	500
	LBSH550	50	1 15/16	46	1 13/16	200
	LBSH560	60	2 3/8	56	2 3/16	200
	LBSH570	70	2 3/4	66	2 5/8	200

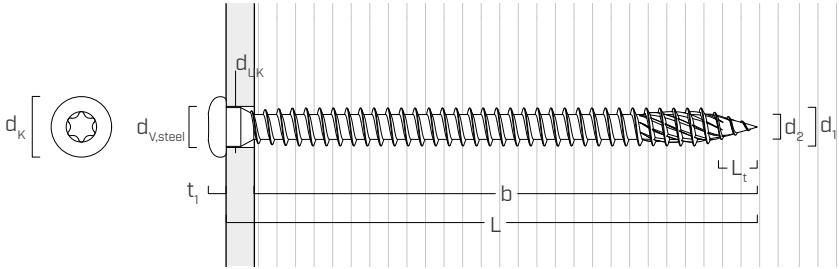
## LBS HARDWOOD EVO

ROUND HEAD SCREW FOR PLATES ON HARDWOODS

DIAMETER [in]	0.14	0.20	0.28	0.48
LENGTH [in]	1	2 3/8	8	8

Also available in the LBS HARDWOOD EVO version, L from 2 3/8" to 8", diameter Ø5 and Ø7 mm (diameter 0.20 and 0.28 inch), see page 286.

## GEOMETRY



Nominal diameter	d <sub>1</sub>	[in] <sup>(1)</sup>	0.20
Outer thread diameter	d <sub>1</sub>	[mm]	5
		[in]	0.197
Head diameter	d <sub>K</sub>	[in]	0.307
Head thickness	t <sub>1</sub>	[in]	0.096
Root diameter	d <sub>2</sub>	[in]	0.137
Underhead diameter	d <sub>UK</sub>	[in]	0.193
Tip length	L <sub>t</sub>	[in]	0.197
Recommended hole diameter on steel plate	d <sub>V,steel</sub>	[in]	3/16 - 7/32
Pre-drilling hole diameter <sup>(2)</sup>	d <sub>V,G≤0.55</sub>	[in]	1/8
Pre-drilling hole diameter <sup>(3)</sup>	d <sub>V,G&gt;0.55</sub>	[in]	9/64

<sup>(1)</sup>The nominal diameter of the screw is converted into imperial units and rounded up to the nearest decimal point.

<sup>(2)</sup>Pre-drilling applies to timber with G≤0.55 (optional).

<sup>(3)</sup>Pre-drilling applies to timber with G>0.55 (required).



## HARDWOOD PERFORMANCE

Geometry developed for high performance and use without pre-drill hole on structural woods such as beech, oak, cypress, ash, eucalyptus, bamboo.

## BEECH LVL

Values also tested, certified and calculated for high density woods such as beech laminated veneer lumber. Certified for use without pre-drilling, for densities of up to 800 kg/m<sup>3</sup> [G = 0.94].